



# WEDDING PACKAGES 2026



WWW.GRACELANDSFARM.CO.ZA  
INFO@GRACELANDSFARM.CO.ZA  
(031)0545018  
@GRACELANDS\_FARM



# *Hello & Welcome!*

Thank you for your interest in Gracelands Farm for your wedding!  
We are incredibly excited about the journey you are on and can't wait to share in it with you!

Gracelands Farm is an all-season, versatile wedding and event venue  
conveniently located 20 minutes from Hillcrest  
and 40 minutes from Pietermaritzburg.

Set in a conservancy valley at the foot of a majestic mountain  
with wide open spaces,  
our farm really is an incredible backdrop for any wedding or event!



Image by: Aimy Louise Photography

Image by: Misha Lee Photography

Our venue, former poultry and dairy farm now modern countryside wedding venue, has a variety of locations for your ceremony, from our trendy Desert Garden, Mediterranean style pergola, paved terrace or our personal favourite The arena!





## OUR VENUE

### *The Barn*

With its rustic barn inspired aesthetics, "The Barn", beautifully echoes the charm of farmstyle living with modern touches. Accommodating up to **100-120** guests for dinner and dancing, The Barn is fully equipped to execute flawless weddings and events. Special features include ambient and dance floor lighting a built in sound system, managed by our in house sound and lighting engineers as well as 2 aircons to ensure the comfort of your guests.



Images by Laura Jean Photography

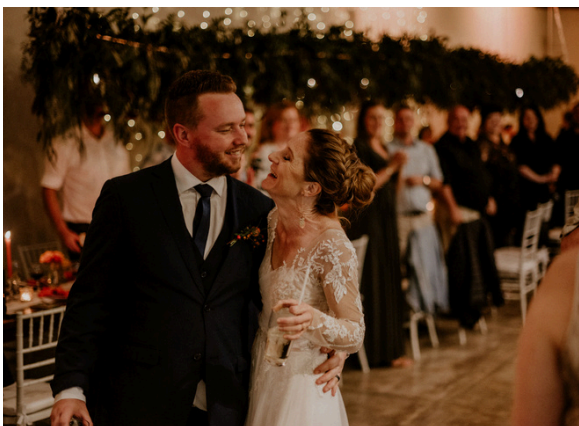


Image by Wilma Towell Photography



## The Ceremony Sites

Perfectly situated to marvel spectacular sunsets and Mountain Views, our ceremony sites are the natural centrepiece of Gracelands Farm. The Desert Garden is ideal for couples looking for a more modern-rustic wedding aesthetic, The Pergola is a unique site for couples seeking a farmstyle wedding ceremony with a touch of Mediterranean charm, The Arena, a truly picturesque location for couples wanting to embrace the rustic essence of a farm style wedding.

The terrace, our paved outdoor sheltered site for ceremonies or canapés.

In the event of rain or severe wind, we can also transform the first quarter of The Barn into a beautifully draped chapel setting, this process is seamless and offers you a "Plan B" for unexpected weather

All our ceremony sites are equipped with a PA system managed by our sound team and furnished with wooden benches.



Image by Olivia Rebecca Photography



Image by Pose a Rosey Photography



Image by Marielle Catherine Photography



Image by Misha Lee Photography





## Our Package

### VENUE:

Exclusive use of the farm  
Use of the guesthouse and honeymoon cottage for Bride & Groom prep  
Honeymoon cottage for the wedding night  
Secure on site Parking  
Generator

### CEREMONY:

Wooden Benches  
Registry Table & Chairs  
PA System with 1 microphone -managed by our sound team

### RECEPTION:

Equipped with 2 x Industrial Aircons  
Wooden banquet tables (seats 6 guests per table)  
Wine barrels for the courtyard as cocktail tables  
White Tiffany chairs  
Wine barrel to display wedding Cake  
Fairy lights on main wall  
Wedding Coordinator for wedding day management  
Professional DJ & Sound system  
Dance floor and ambient lighting  
Wedding Cake/ confectionery alternative  
Fully stocked bar including bar staff & standard glassware  
Welcome drinks for cocktail hour  
*(Please kindly refer to our contract for our t's & cs)*



## Your Investment:

### Friday/ Saturday/ Sunday & Public Holidays:

up to 50 people - R39 500 incl. vat  
50-120 people - R48 100 incl. vat

### Monday - Thursday:

up to 50 people - R35 420 incl. vat  
50-120 people - R43 700 incl. vat



## Add To Your Package

ITS THE LITTLE EXTRAS THAT MAKE A WEDDING GREAT!

### COCKTAIL HOUR

*Our sweet little stations are the perfect crowd pleaser along with a Harvest table or canapés! The perfect mood setter!*

- Gin bar - from R45pp
- Champagne Bar - from R35pp
- The Hot Chocolate Bar - from R30pp
- White wheel barrows for drinks - R150 each
- Garden umbrellas - R230 each (5 available)

### RECEPTION:

- Assistance along your planning journey from our in house wedding planners & coordinators at Hello Bride - R5000.00
- Our professional in house MC - R3500.00 (a good MC is SO important!)
- Fire pits (incl. wood)- R 350.00 each
- Gas heater - R550.00
  
- Fairylights for aircon wall - R1000.00
- Fairylights for pillars - R600.00
- Fairylights for the ceiling- R2500.00 (single strand on each beam)
- Fairylights for the ceiling- R3500 ("sky full of stars" - triple strands between beams)



Image by Tales of Light Photography



Image by Aimy Louise Photography



# FAQ

## WHAT YOU NEED TO KNOW

Q: What is the timing for my wedding?

- When booking with us, you have exclusive use of the venue. Ceremonies starting before 2pm, the venue is available for 9 hours. Ceremonies starting after 2pm the venue is available until 11:30pm

Q: How much time is allowed for set up and clean up (Saturday weddings)

- Set up for your wedding can begin the day before from 8am-4:30pm
- Set up on the day can continue from 8am
- If the decor company requires an additional day for set up, please feel free to arrange this with us- subject to no other events being booked.
- All items must be collected and removed on Monday between 8am-12noon , the venue is closed on Sundays

Q: Do you allow decorations?

- Yes! We love decorations! such as flowers ,candles, draping etc... We kindly ask that nothing be applied to our walls with prestik, tape or nails. If you choose to use candles, we require that they are in votives or on a stand to prevent damage to our surfaces. We do not permit paper confetti on our farm, we welcome petals, bubbles, and any biodegradable alternatives that won't cause harm to our beloved animals. For liability reasons we arent able to permit sparklers in the venue, only outside in the courtyard.

Q: Do you have any guidelines concerning departures?

- We love seeing that final departure photo of the couple and happily permit sparklers outside our venue. We unfortunately do not allow fireworks, wish/paper lanterns or paper confetti canons due to the nature of our surroundings

Q: When do I have access to Manor View and Rosemary Cottage for pre wedding prep?

- You and your bridal party have full access to Manor View and Rosemary Cottage from 7am on the day of your wedding. If you require an earlier start, please feel free to arrange this with us.





# FAQ

## WHAT YOU NEED TO KNOW

### Q: Can you recommend any local service providers?

• There's a tremendous amount of local talent and vendors that we love working with, When you book with us we will share our preferred suppliers list with you along with special offers and discounts available from some of these vendors . We highly recommend you use the vendors we have suggested, for the smooth running of your wedding day.

### Q: What happens if there is rain on my wedding day?

• If rain is predicted for the day of your wedding, you will need to make the necessary arrangements for a bedouin tent/ marquee for your garden ceremony. If your guest list is 85 people or less, we can host your ceremony in The Barn where we transform the first quarter of The Barn into a beautifully draped chapel setting, this process is seamless and offers you a "Plan B" for unexpected weather. The cost for this is an additional R1150 incl vat

### Q: Do you provide an inhouse bar service?

• Yes, we have a fully stocked bar that includes bar staff, we also include welcome drinks for cocktail hour to the value of R3000. This can also be transferred to a R3000 bar tab if preferred.

### Q: A wedding cake is included in your package?

• Yes! We are privileged to have an on-site bakery The Slice Cakery, who will create your wedding cake/ cupcakes/biscuit favours etc... to the value of R5500 (50-120 pax weddings) R3000 (up to 50 guests) should your order be more than the amount allocated in your package , the difference will need to be paid in.

### Q: What is the refundable deposit?

• We require a R5000 refundable breakages deposit over and above your venue hire fee, this is refundable after your wedding if there are no breakages or damage to property and items.

### Q: How does catering work?

• We have an INCREDIBLE in house catering team, they offer a variety of styles to suit different tastes and budgets, feel free to chat to them directly.

For liability reasons we unfortunately don't allow outside caterers.

### Q: Do you have accommodation on site ?

• Yes we do, we have a guesthouse -Manor View , which sleeps 8-10 people at R460pppn all linens are provided. The guesthouse is self catering. There is additional accommodation in our area, please enquire for the accommodation list



Image by Elysian Photography



Bleu Berri Concept Catering

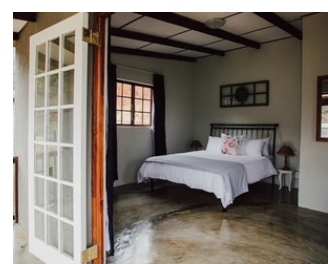


Image by Capture It Photography





---

*Get in Touch!*

[www.gracelandsfarm.co.za](http://www.gracelandsfarm.co.za)  
[info@gracelandsfarm.co.za](mailto:info@gracelandsfarm.co.za)  
(031)0545018  
@gracelands\_farm